

# **TECHNICAL RIDER FOR – SLUNEČNÍ KOUPEL**

## **BUCHTY A LOUTKY + COLLEGIUM MARIANUM**

### **Stage**

Minimum stage dimensions for puppeteers: 6m x 8m (W x D)

Minimum height: 3,5m.

Black curtains or panels

2x big table for props (red in plan)

### **Lighting**

Control board in FOH (provided by the company - DMX, ArtNet, sACN familiar). - table min. 100cm x 60cm/70cm high

1x DMX line from FOH to stage for our lighting system

1x CAT6 line from FOH to stage for video

4x RGB LED PAR - beam angle 40°- or we can approve any substitutions, please ask us

1x asy flood 500W with barndoors on floor stand

1x RGB LED PAR - beam angle 40°- or we can approve any substitutions, please ask us

3x direct socket 230V/16A (schuko/french) on stage

1x dimming socket 230V/16A (schuko/french) on stage

possibility to control house lights from live post

sufficient number of extension leads

### **Setting and striking the show**

We need one persons to help us with unloading and loading the van.

5 hours set up time

2 hous break down time

Duration of the show: cca 1 hour without interval.

### **Musicians**

3x stable music stands with warmwhite dimmable lamps!!

3 x chairs without arms

### **Dressing room**

1x dressing room for puppeteers (5 persons) + chairs

1x dressing room for musicians (3 persons) + chairs

**Refreshment in the dressing rooms – coffee, water, fruit, biscuits etc.**

### **HOUSE / VENUE CREW**

It is required to have local/house lighting technician present, who are familiar with the venue and house lighting systems being used.

### **Parking**

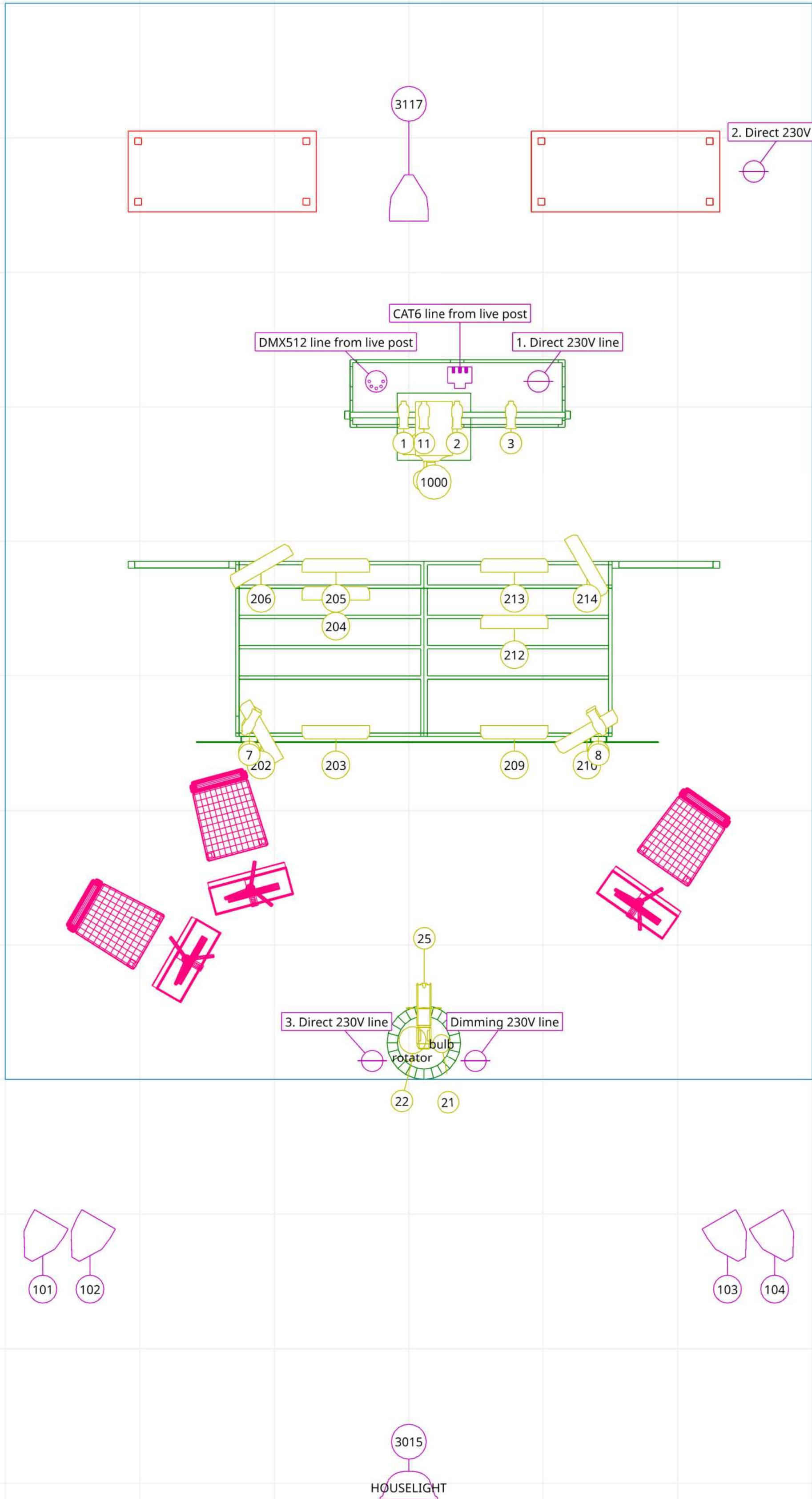
Secure parking for one 3,5t van and car for the whole period of production as close to the venue load in as possible

### **Contact**

Puppet theater - Daniel Schenk - GSM: +420 776 572 685 / e-mail: info@mittelpunkt.cz

Orchestra, soloists – Tereza Skřivanová – GSM: +420 774 448 340 / e-mail: production@collegiummarianum.cz

Technician, lights - Lukáš Valiska - GSM: +420 602 829 671 / e-mail: waleek.cz@gmail.com



- ## Symbol key
- |   |                                 |
|---|---------------------------------|
|   | RGB LED PAR - minimum 40° (5)   |
|  | whatever houselights :) (1)     |
|  | Omnidirectional Bulb (1)        |
|  | LED strip (12)                  |
|  | Mini LED zoom spotlight (11)    |
|  | Asy flood 500W (1)              |
|  | Ultra Short Throw Projector (1) |
|  | mini Profile Zoom (1)           |
|  | DMX Rotator (1)                 |

- ### Color key
- 1. PROVIDED BY PROMOTER - LIGHTING FIXTURES
  - 1. PROVIDED BY PROMOTER - MUSIC STANDS AND CHAIRS
  - 1. PROVIDED BY PROMOTER - TABLES
  - 2. MINIMUM DIMENSION OF THE STAGE 6m x 8m
  - 3. OWN FIXTURES
  - 3. SCENE SET

SECTION

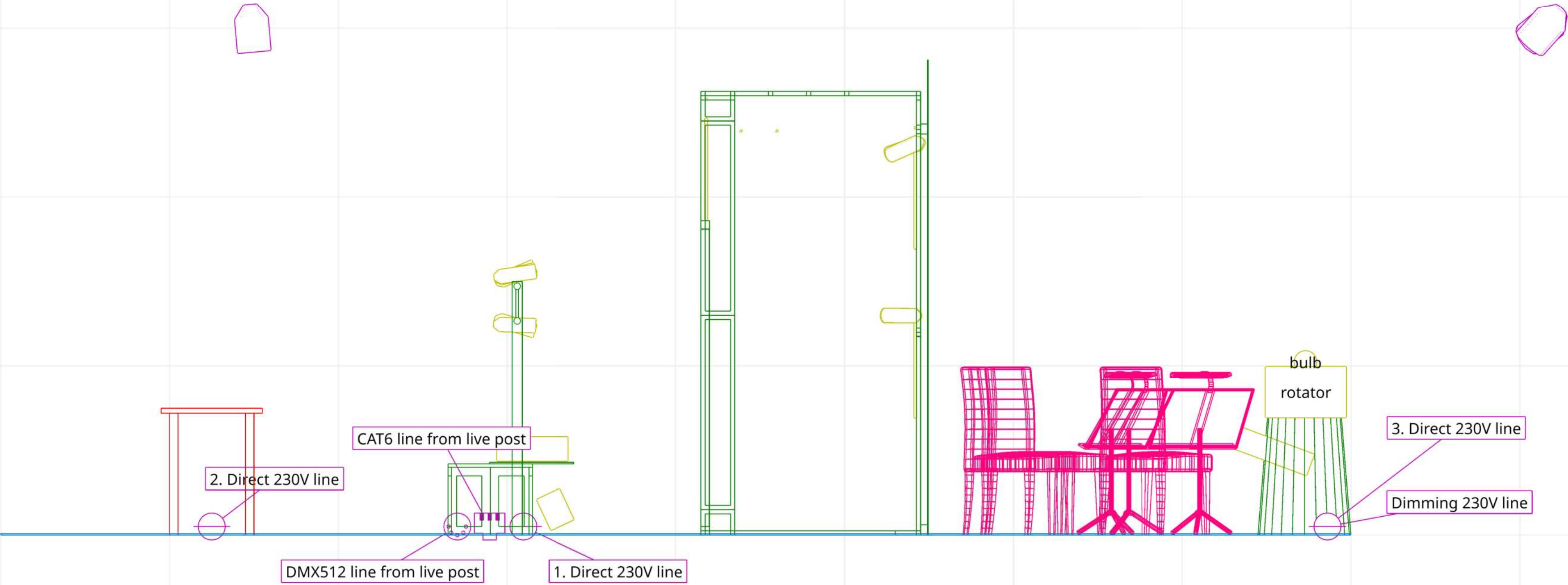
Symbol key

- RGB LED PAR - minimum 40° (5)
- whatever houselights :) (1)
- Omnidirectional Bulb (1)
- LED strip (12)
- Mini LED zoom spotlight (11)
- Asy flood 500W (1)
- Ultra Short Throw Projector (1)
- mini Profile Zoom (1)
- DMX Rotator (1)

Color key

- 1. PROVIDED BY PROMOTER - LIGHTING FIXTURES
- 1. PROVIDED BY PROMOTER - MUSIC STANDS AND CHAIRS
- 1. PROVIDED BY PROMOTER - TABLES
- 2. MINIMUM DIMIMENSION OF THE STAGE 6m x 8m
- 3. OWN FIXTURES
- 3. SCENE SET

HOUSELIGHT



Project  
Buchty a loutky + Collegium Marianum - Sluneční koupel

Project location  
Generic rider / minimum setup

Client

Drawing author  
Lukas Valiska - waleek.cz@gmail.com, +420602829671

Project date  
2025

Drawing version  
28.04 2025

Grid spacing 1m x 1m



Symbol key

RGB LED PAR - minimum 40° (5)

whatever houselights :) (1)

Omnidirectional Bulb (1)

LED strip (12)

Mini LED zoom spotlight (11)

Asy flood 500W (1)

Ultra Short Throw Projector (1)

mini Profile Zoom (1)

DMX Rotator (1)

Layer key

1. PROVIDED BY PROMOTER - LIGHTING FIXTURES

1. PROVIDED BY PROMOTER - MUSIC STANDS AND CHAIRS

1. PROVIDED BY PROMOTER - TABLES

2. MINIMUM DIMIMENSION OF THE STAGE 6m x 8m

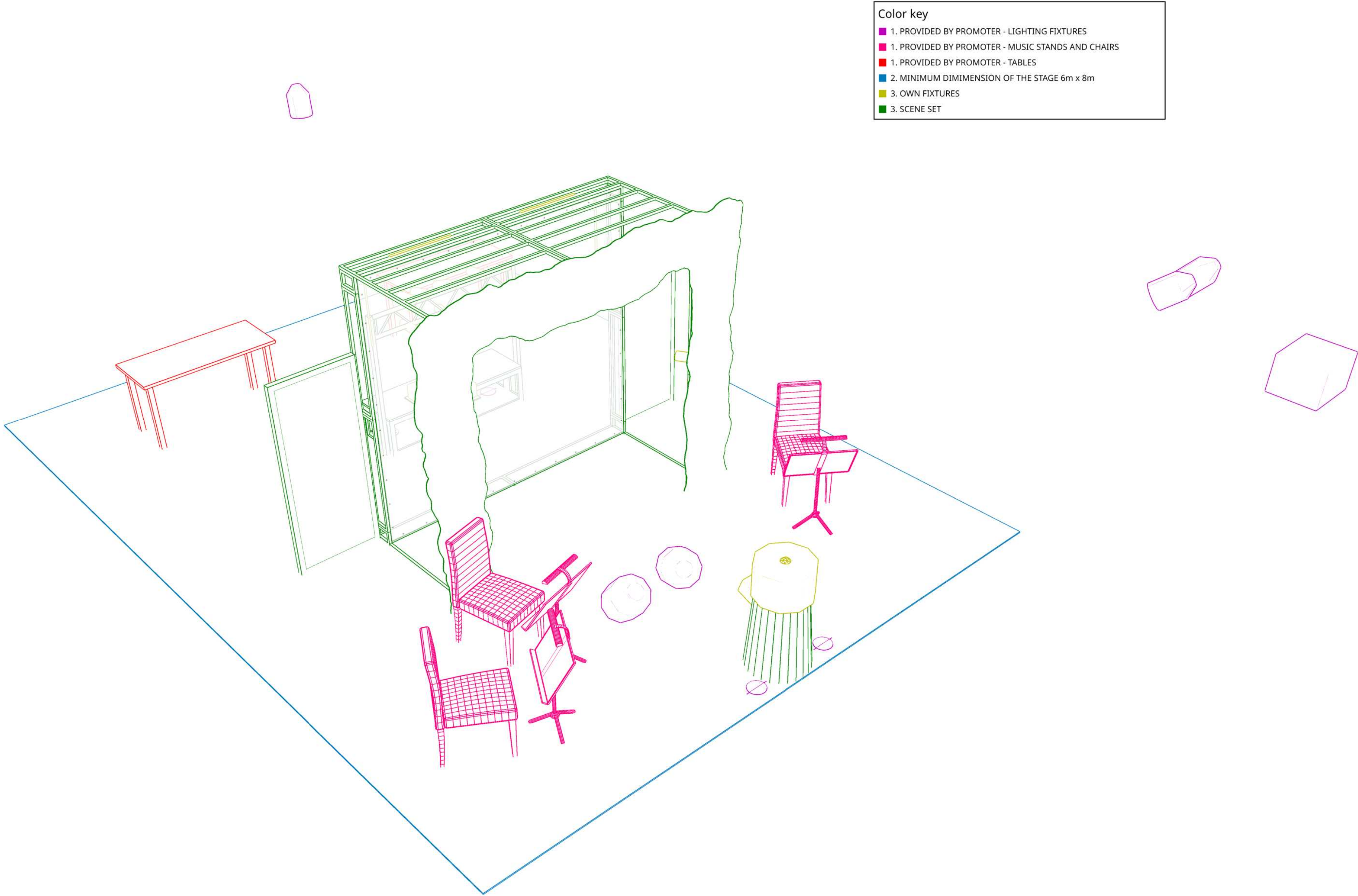
3. OWN FIXTURES

3. SCENE SET

The diagram illustrates a stage layout with a grid. At the top center, a purple-outlined rectangle is labeled "HOUSELIGHT". Below it, a large green-outlined rectangle represents the stage area. Inside this area, there are several yellow-outlined rectangles representing lighting fixtures, including a "bulb rotator" in the center. To the left and right of the stage, there are pink-outlined rectangles representing music stands and chairs. At the bottom of the stage, there are three purple-outlined circles representing tables. The diagram is divided into three main sections by vertical lines, labeled "DM 3. Direct 230V line", "Dimming 230V line", and "230V line". To the right of the stage, there is a label "2. Direct 230V line".

Project Buchty a loutky + Collegium Marianum - Sluneční koupel		Grid spacing 1m x 1m
Project location Generic rider / minimum setup	Project date 2025	
Drawing author Lukas Valiska - waleek.cz@gmail.com, +420602829671	Drawing version 28.04 2025	





Project  
Buchty a loutky + Collegium Marianum - Sluneční koupel

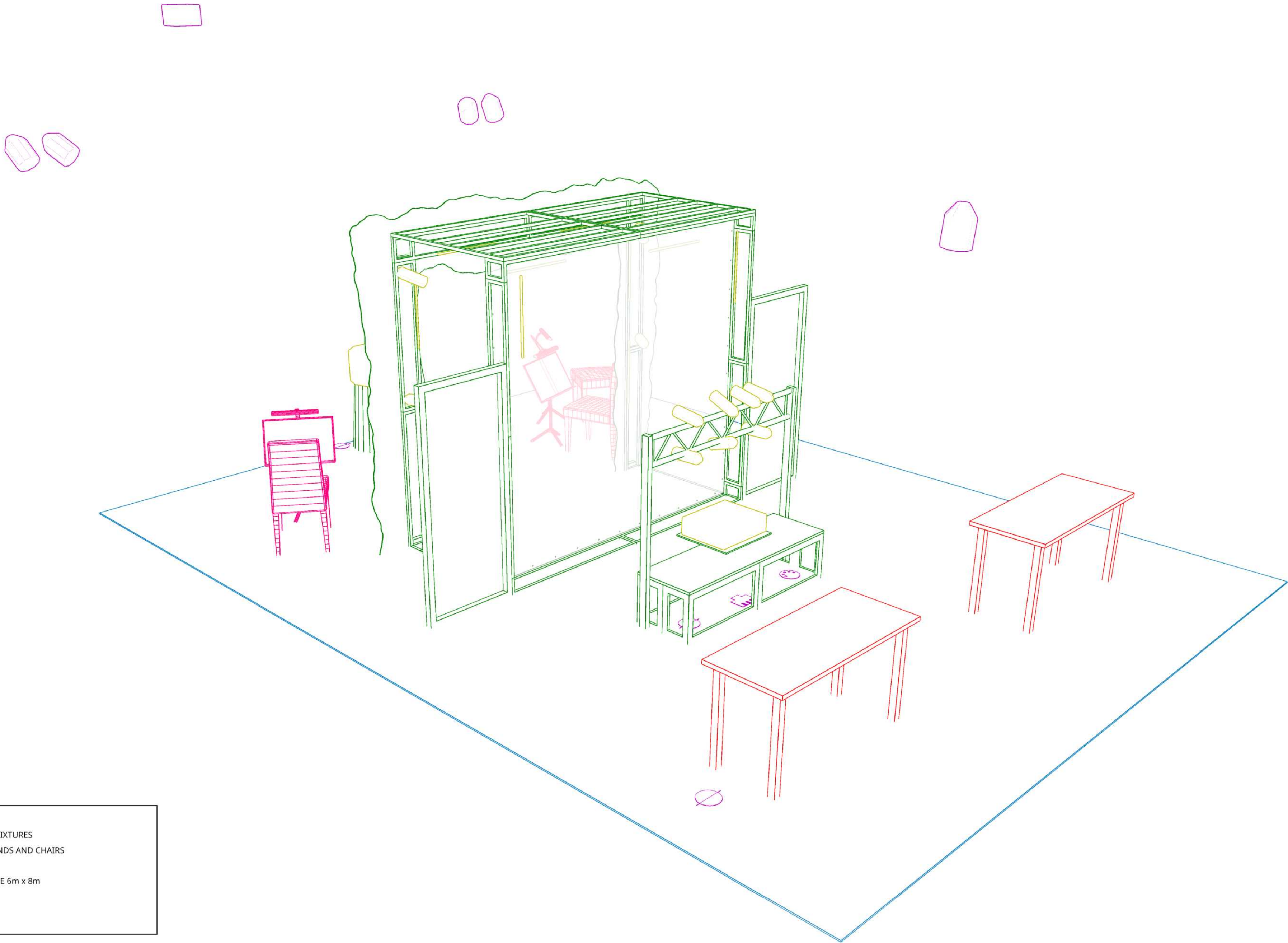
Project location  
Generic rider / minimum setup

Client  
  
Drawing author  
Lukas Valiska - waleek.cz@gmail.com, +420602829671

Project date  
2025

Drawing version  
28.04 2025





Color key

- 1. PROVIDED BY PROMOTER - LIGHTING FIXTURES
- 1. PROVIDED BY PROMOTER - MUSIC STANDS AND CHAIRS
- 1. PROVIDED BY PROMOTER - TABLES
- 2. MINIMUM DIMIMENSION OF THE STAGE 6m x 8m
- 3. OWN FIXTURES
- 3. SCENE SET

Project		
Buchty a loutky + Collegium Marianum - Sluneční koupel		
Project location	Project date	
Generic rider / minimum setup	2025	
Client		
Drawing author	Drawing version	
Lukas Valiska - waleek.cz@gmail.com, +420602829671	28.04 2025	